

Development of the Corridor 24 Rotterdam–Genoa. Workshop for the strategy assessment of Frankfurt–Mannheim area

TASK

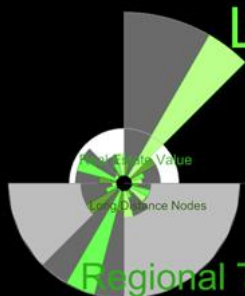
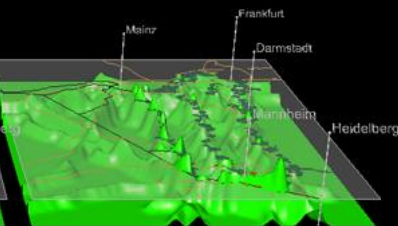
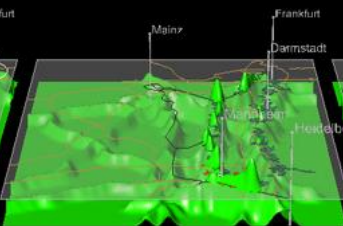
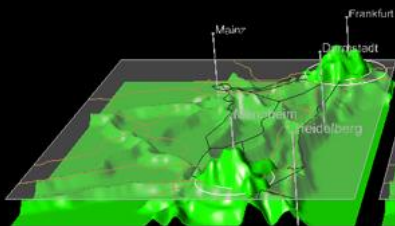
A visual support for Cost-Benefit Analysis based on the ANP assessment procedure.

METHOD

Interactive Visualisation Tool (InViTo), a visual method for managing spatial data in real-time.

TECHNIQUE

- Comparison between different alternative options;
- Dynamic maps which visualise the symbolic positioning of the expected effects of each ANP element;
- 3D meshes change in height according to the values given by actors on the basis of ANP scale of evaluation;
- a slicing plane intersects the 3D meshes to visually select the areas included on a specific range of values.
- 2D chart can be included to visualise the ranking of ANP elements.



Logistic Clusters

Economic Aspects

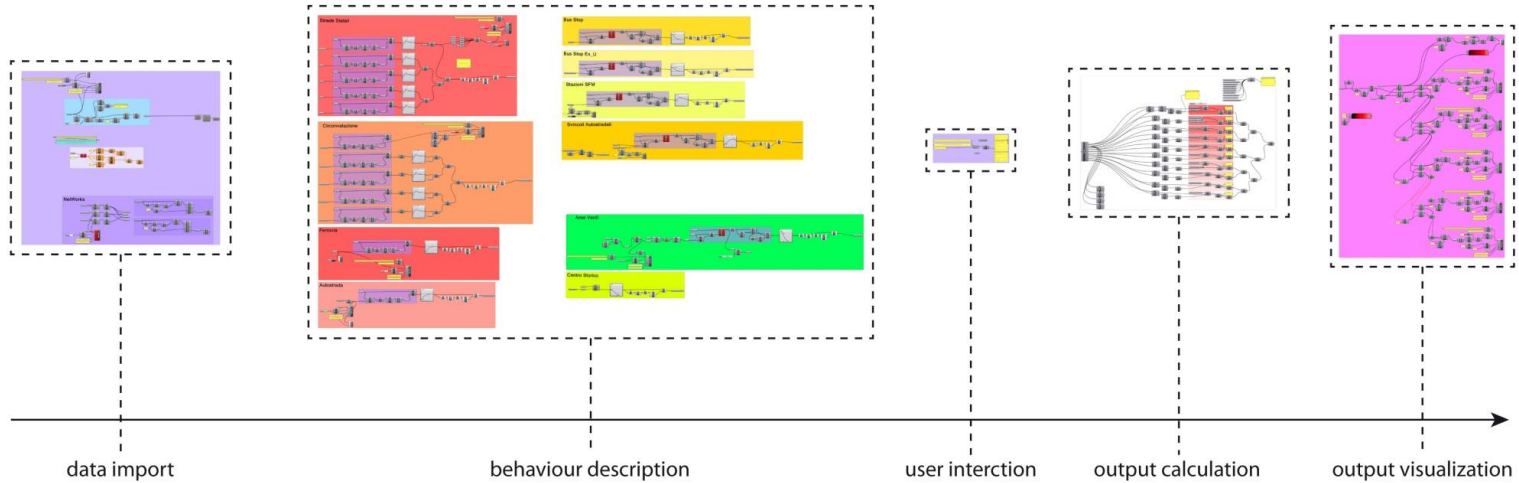
Transport Aspects

Regional Transport

GeoViz - Hamburg 2013

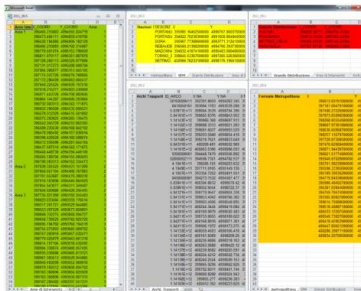
Elena Masala and Stefano Pensa

stefano.pensa@polito.it

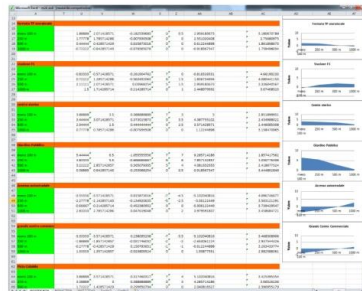


GIS data imported as excel sheets. Each geographic element is described with its main characteristics and

attributes in order to use data in model calculation



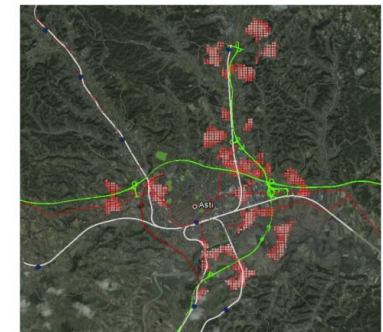
Dynamics of assesment method or spatial behaviours are described in an excel file and imported in real time



An user friendly interface allows user to interact with the model in real time.



Output data are visualized in friendly environments such as Google Earth to allows user to better understand main issues and effects of their choices.



<http://youtu.be/6ghul0h1YRU>